



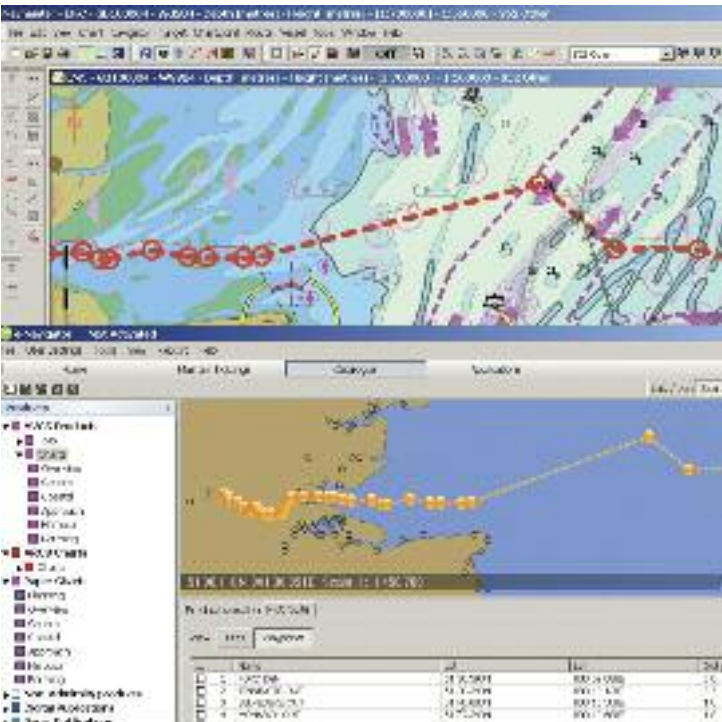
LILLEY & GILLIE



Directing International Shipping since 1812

Serving the Shipping Industry from both sides of the world

# The Total ECDIS Solution



INTELLIGENT NAVIGATION SOLUTIONS



# Lilley & Gillie/DPM launch The Total ECDIS Solution



To ensure vessels meet the IMO ECDIS mandatory fit requirements is the daunting task facing shipowners and managers. These are some of the questions that will need to be addressed.

## Hardware

Do we need single, double, triple installations and how will this work with the current bridge layouts?

## Chart data

How do I order? How does the update service work? What type of data do I require to meet regulations?

## Crew training

What are the types of training requirements? How do new crew keep up to date with the systems installed?

## System maintenance

What if there is a new ECDIS standard in future years? What happens about warranty?

The Total ECDIS Solution is the answer to all of these questions.

## Hardware

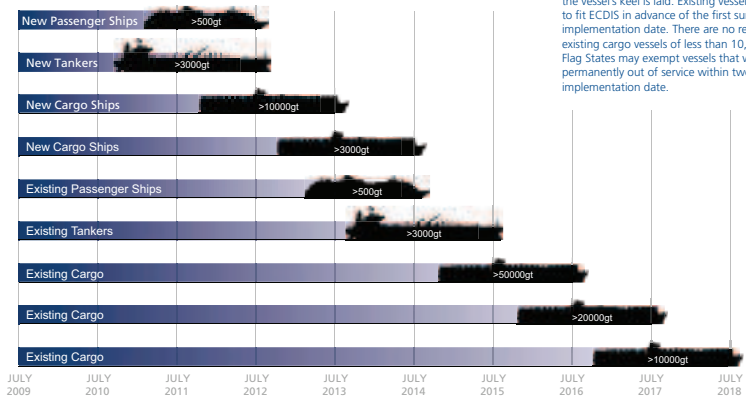
The hardware is manufactured in-house and is supplied with Navmaster ECDIS software. The result is a system type approved by DNV, GL, CCS, and is also wheelmarked. The modular hardware provides a flexible solution with console mount, desk top mount or pedestal mount installations. Installation and system commissioning is carried out by a global network of fully trained engineers. Standard hardware specifications suit most existing bridge layouts:

- 24" widescreen monitors
- Solid state hard drives
- PCI card connection for 8 inputs and 4 outputs



## 10 STEPS TO ECDIS MANDATION

### Step 1. Find out how your fleet will be affected



Fitting of ECDIS will become mandatory in a rolling timetable that begins in July 2012. The legislation will be phased by vessel type and size to eventually apply to almost all large merchant vessels and passenger ships. Use the diagram to determine which of your ships will be affected and when.

The timetable for newbuilds is based on the date the vessel's keel is laid. Existing vessels will be required to fit ECDIS in advance of the first survey after the implementation date. There are no requirements for existing cargo vessels of less than 10,000 gross tons. Flag States may exempt vessels that will be taken permanently out of service within two years of the implementation date.

Based on IMO Circular letter issued December 2008. Please check [www.thefutureofnavigation.com](http://www.thefutureofnavigation.com) for the latest updates and news.

[thefutureofnavigation.com](http://thefutureofnavigation.com)



## Chart data

As a world leading chart agent, Lilley & Gillie and DPM can provide the Admiralty AVCS and E Navigator service. AVCS offers the widest coverage of official ENC data currently on the market. Flexible purchase and licence terms are available for ENCs together with onboard software. This allows vessels to manage and purchase additional charts whenever needed. At present chart update services are influenced by each vessels communications package. However, to suit all vessel types, packages from weekly CDs by mail through to full online updates are available.



### **Customer-facing warranty procedures**

Ensuring vessels are kept going with a fast and reactive service is key to our warranty. Installation of our ECDIS is completed by trained professionals through a breakout box system. This allows both monitor and PC to be connected only by a single cable. This means any future removal and replacement can be done by crew to reduce the need for external service engineers.

### **Steps to resolve a typical warranty issue**

- Defective monitor reported.
- Replacement is shipped in accordance to vessel instructions by courier/three-day service worldwide.\*
- Crew replace defective monitor and ship back according to our instructions.
- Assessment of defective monitor. No further action if covered by warranty. Any damage caused outside warranty new monitor is charged to owners account.

\* There are exceptions to the 2/3-day courier service where customs and import issues are possible (e.g. Brazil and China). Agents in these countries are established to ensure parts are available when required.



**CCS**

